

An ultra-lightweight
sprayer solution.

ProKure[®] S1

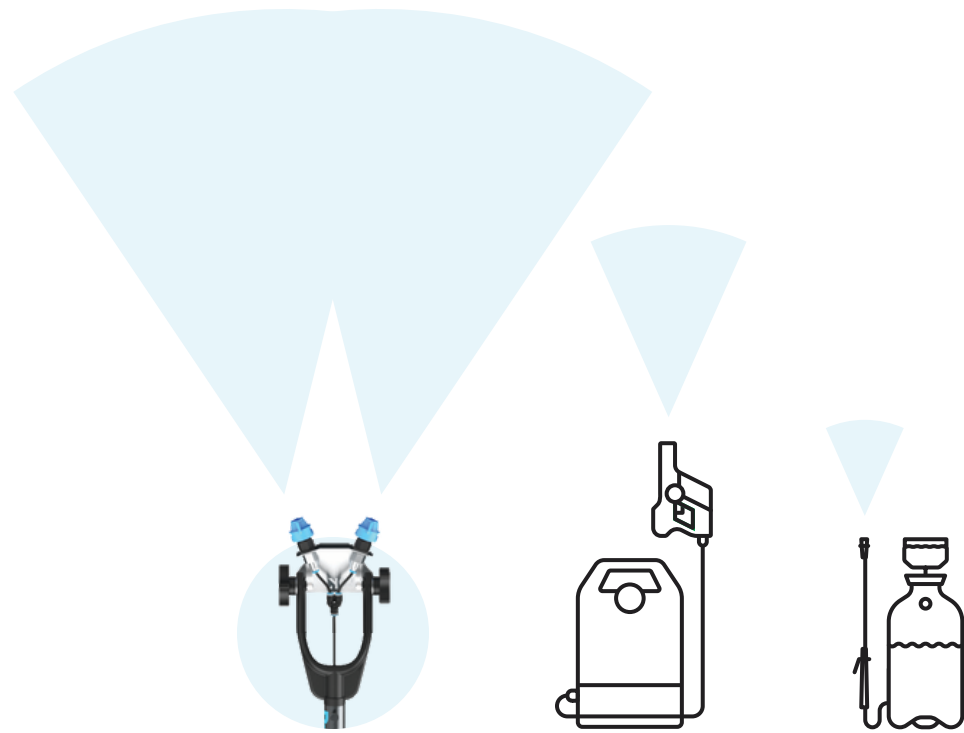
Owner's Manual

Prokleanservices.com
855.PKS.PROS (757-7767)



Welcome! _____

Thank you for purchasing the ProKure S1 — your ultra-lightweight sprayer solution for maximum coverage, product durability, and sprayer modification to meet your specific treatment needs.



| | ProKure S1 | Electrostatic Sprayer | Pump Sprayer |
|---------------------------------|------------|-----------------------|--------------|
| Volume (GPM) | 2 GPM | .02 GPM | .26 GPM |
| Max Weight (Including Backpack) | 10 lbs. | 30 lbs. | 50 lbs. |
| Battery Life | 2-3 Hours | 2 Hours | N/A |

Table of Contents _____

| | |
|--------------------------------|----|
| INTRODUCTION | 01 |
| COMPONENTS | 05 |
| PREP & USE | 11 |
| ASSEMBLY | 11 |
| CONNECTION TO LIQUID CONTAINER | 12 |
| RECHARGING YOUR BATTERY | 13 |
| CHANGING SPRAY TIPS | 14 |
| LIABILITY | 15 |
| WARRANTY | 16 |
| CONTACT | 17 |



What's Included



ProKure S1 Overview



1 Soft Rubber Handle

2 On/Off Switch

3 Durable Aluminum Tubes

4 Control Handle

5 Flip Clip

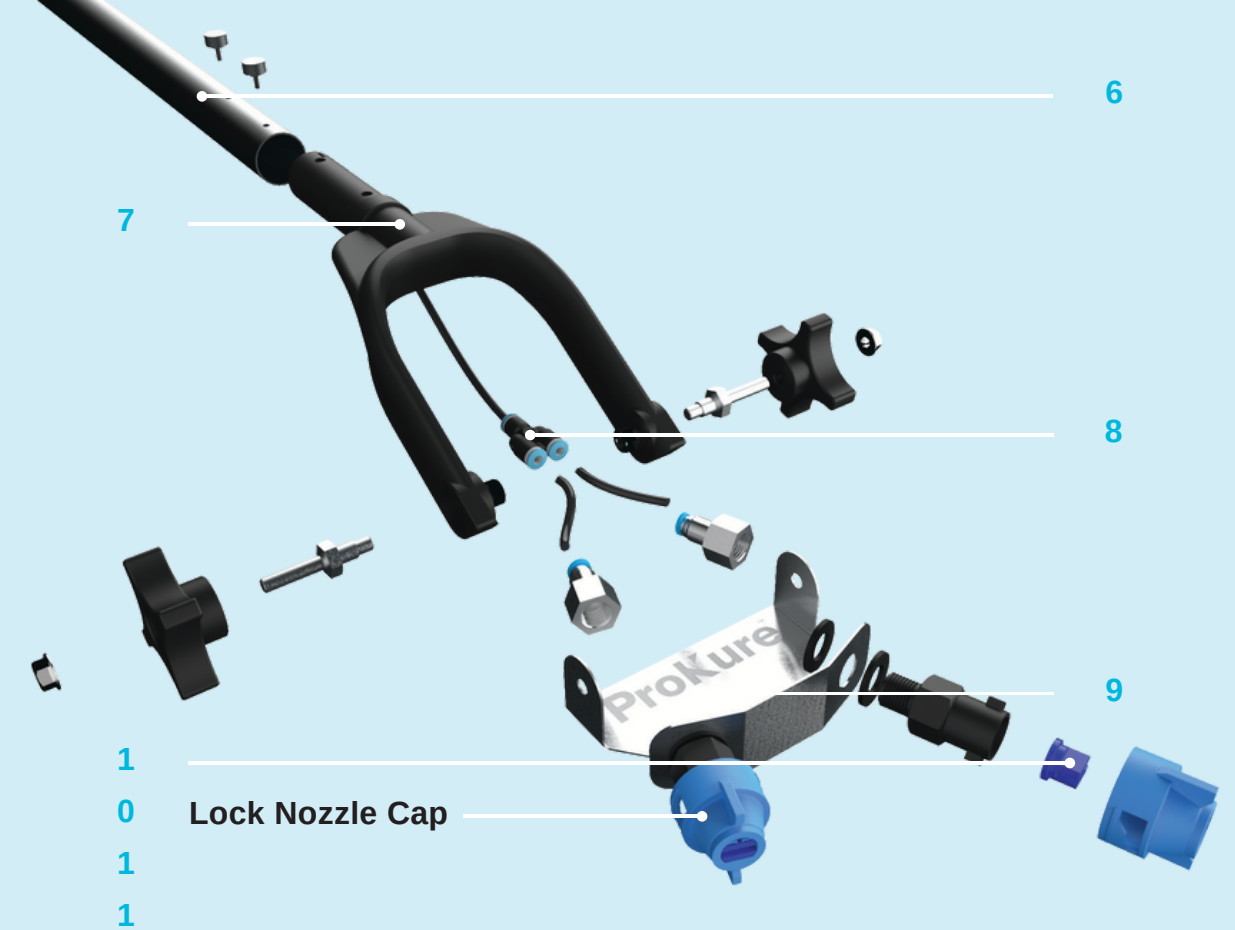
6 Extendable Wand from 3 ft.-5 ft.

7 Rotatable Sprayer Head

8 Y Push-Splitter

9 Stainless Steel Head

10 Dual Sprayer Tips



1
0
1
1

Lock Nozzle Cap



4 Lbs

Weight



2 Gallons
(8 Liters)

Flow Rate
Per
Minute

3-8'

Optimum
Spray Distance

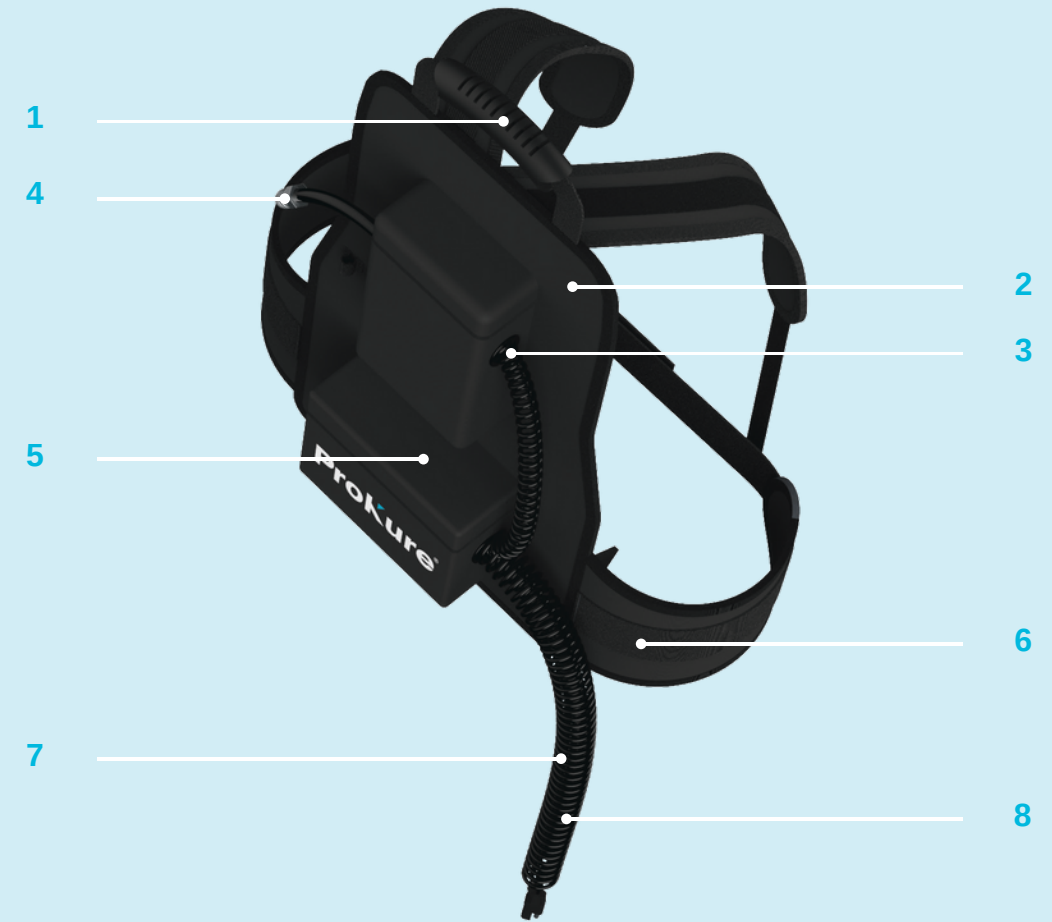
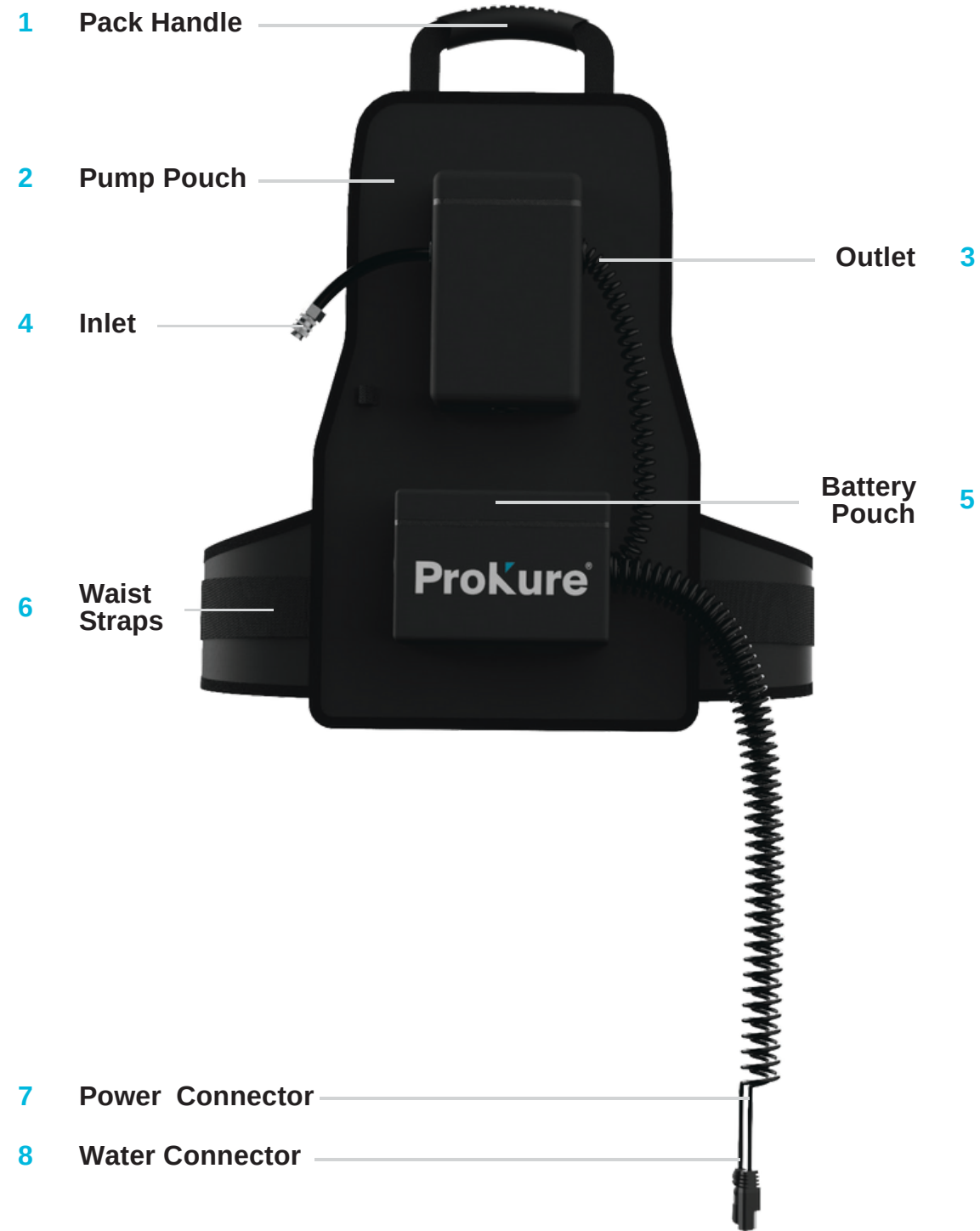
5k-10k
Ft.2

Coverage Per
5-Gallon
Container

16.5
Acres

Coverage Per
Charge

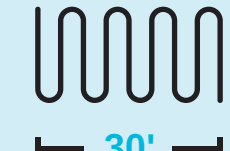
Backpack Overview



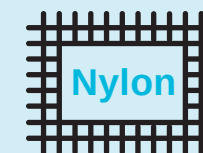
5 Lbs
Weight
(With Battery)



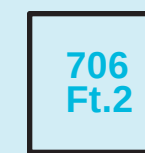
21"
13"
Width
& Height



30'
Hose
Included



Nylon
Material



**706
Ft.2**
Mobility



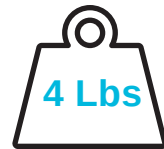
**Connects to
Any-Size Liquid
Container**

Battery Overview



PRO TIP

Make sure your battery is fully charged before treatment.



4 Lbs

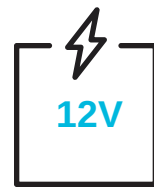
Weight



160 PSI

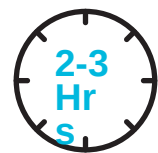


Pressure



12V

Voltage



2-3
Hr

Constant-Use
Run Time
Per Charge

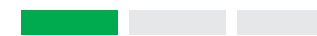
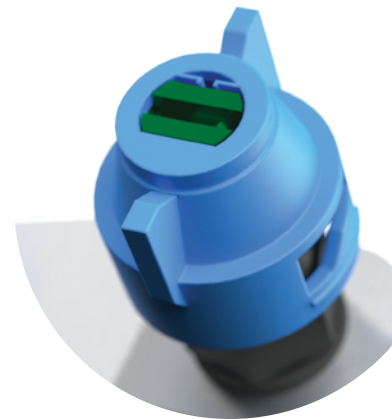


8
Hrs

Time Required
for Full
Recharge

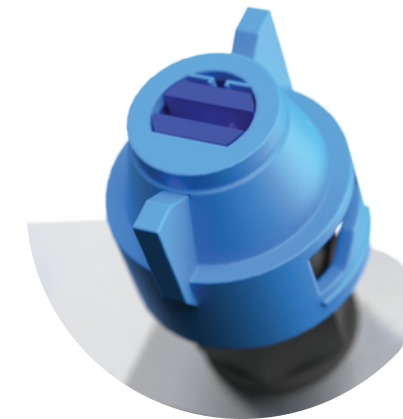
Spray Tip Options

GREEN TIPS



Fine Mist

BLUE TIPS



Heavy Spray

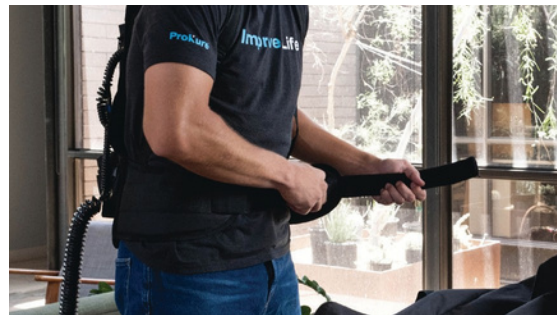
REORDERING SPRAY TIPS

Call ProKlean Services at **855.PKS.PROS** or e-mail us at **sales@prokleanservices.com**.

Assembly



STEP 1: Unpack shipping container. Unhinge flip clip to adjust spray head position and wand length.



STEP 2: Put on the backpack. Fasten shoulder and waist straps to comfort.



STEP 3: Connect ProKure S1 to the backpack with power and water connector cords.



STEP 4: Connect the backpack to liquid container. See Page 11.



SCAN ME FOR VIDEO INSTRUCTIONS



Connection to Liquid Container



STEP 1: Remove 5-gallon container from shipping container and fill with water.



STEP 2: Insert the quick-connect devices into each other, found on the 30' blue hose and the tube attached to the 5-gallon container cap.



STEP 3: When sprayer is first turned on after connection, expect a few seconds for the motor to draw liquid for maximum spray.



SCAN ME FOR VIDEO INSTRUCTIONS



Recharging Your Battery



STEP 1: Unpack battery charger, found in the white box within the shipping container, and insert into the battery pouch on the backpack.



STEP 2: Connect battery charger to a wall outlet.



STEP 3: Insert battery charger cord into the cord coming from the battery pouch, on the outside of the backpack. Let the battery charge for 8 hours or until the charger indicator light turns green.



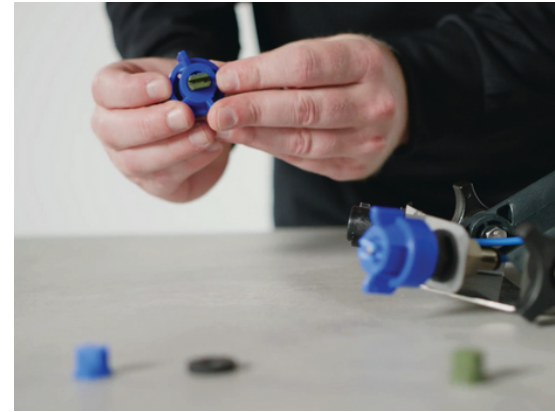
SCAN ME FOR VIDEO INSTRUCTIONS



Changing Spray Tips



STEP 1: Twist lock nozzle cap counterclockwise. Handle with care, so as not to misplace spray tip and rubber washer.



STEP 2: Push spray tip out of lock nozzle cap and replace with desired spray tips. Place sprayer tips in first, followed by the rubber washer.



STEP 3: Twist lock nozzle cap clockwise. Lock nozzle cap is fully secured after a complete and firm rotation.



SCAN ME FOR VIDEO INSTRUCTIONS



Liability

When using electric products, basic safety precautions should always be followed to reduce the risk of electric shock and personal injury, including the following:

- Consider your work area environment. When using the ProKure S1 be aware of overhead electrical wires.
- ProKure S1 is powered by DC current only. Do not attempt to operate ProKure S1 with AC current.
- Always flush out chemical with clean water after every use.
- Never pull the ProKure S1 by its cord or yank it to disconnect it from the battery.
- Keep the cord away from heat, oil and sharp edges.
- Keep your ProKure S1 clean. (For safer operation, follow instructions for attaching accessories. Keep the upper handle switch area dry, clean and free from oil, grease and water).
- Disconnect the ProKure S1 when not in use and when attaching accessories.
- Inspect for damage before using ProKure S1.
- When servicing, use only genuine parts and accessories.
- ProKure S1 is a power tool. As with any power tool, always use both hands to ensure safe operation.
- Ensure you adopt the correct posture when using ProKure S1. Maintain a straight back.
- Adjust the position of the control handle (see Page 14), so your arm is straight when holding the handle. Your back should be straight at all times. Save these instructions for future reference.

ProKlean Services

REVOLUTIONIZING KLEAN

855.PKS.PROS (757-7767)
www.prokleanservices.com

3041 Nationwide Pkwy.
Brunswick, OH 44212